

Boulmer Howick & Longhoughton

LONGHOUGHTON BOULMER & HOWICK NEIGHBOURHOOD PLAN FEEDBACK FROM THE RECENT CONSULTATION

Thank you to all residents who have sent in their completed questionnaires and those who attended any of the four drop-in events at Boulmer, Howick and Longhoughton. We promised to give feedback through the newsletter. The following is a summary of the views and comments expressed. The full results can be found on the web site

www.longhoughtonndp.co.uk/consultations

Vision: 94% were in favour of the vision. One resident considered that there should be more reference to the conservation of wildlife and species, especially in view of climate change. Others thought that it was very important to maintain the essential character of the villages and that any developments should be the right quality and appropriate design. The overall view was that the vision is well-balanced.

Objectives: 94% were in favour of the objectives. There was significant support for good quality development of an appropriate scale to achieve a sustainable community and particularly the maintenance of essential services. The preservation of heritage and character for future generations was suggested as an obligation. In relation to the environment, more emphasis should be given to increasing species and habitats. Second homes and holiday lets need to be restricted, especially at Boulmer.

Planning themes: 90% were in favour of the these. Some thought they were too abstract. Affordable (low cost) housing for local people was thought to be a priority, with appropriate accommodation for young families and older people. The green infrastructure should be developed for cycling and walking and this could provide opportunities for the creation of small businesses. Some thought that there should be more information to advise tourists and visitors of our heritage and wild life.

Areas for development and protection: Sites at Boulmer and Longhoughton were nominated to be designated as green spaces. Affordable housing should be spread rather than built in concentrations. There should be a designated site in Longhoughton for small offices. It was thought essential to safeguard the natural, historic and environmental character of the area and to improve the meadows along the coast for flora and fauna. There was support for green routes including the green-necklace

in Longhoughton.
Contd. p3



CONTACT YOUR COUNCILLOR

Boulmer Ward

Adrian Hinchcliffe (Vice Chair)
01665 572888

Howick Ward

John Haughey 01665 577020

Longhoughton Ward

William Bell 01665 577661
Peter Bromley 01665 577071
Kris Cochrane 01665 572923
Carole Green 01665 572610
Ellie Phillips 01665 577563
(Chair)

County Councillor

Wendy Pattison 01665 579137

Parish Clerk

Elizabeth Taylor 01665 830040
parishclerk@hotmail.com
[Please contact the Clerk about the three parish councillor vacancies.](#)

Websites

northumberlandparishes.uk/longhoughton
www.longhoughtonndp.co.uk

Newsletter Editors

Adrian Hinchcliffe
adrian.hinchcliffe@btopenworld.com
Ellie Phillips
eleanorphillips1@gmail.com
Chris Thomas (Design)
chrismerylthomas@gmail.com

Please let us have your newsworthy items for the next edition before the next **deadline on 18 March**.
Thank you.

Disclaimer: The Boulmer, Howick and Longhoughton Community Newsletter is published by Longhoughton Parish Council. The views expressed represent the understanding of the editors or of any named person contributing to the Newsletter.

Howick & Boulmer News

A NEW YEAR FEAST

The Great Pie of Howick was nine feet in circumference and weighed 168 pounds. Containing game birds, geese, turkeys, blackbirds and pigeons, it was baked in the kitchen of the old hall by housekeeper Mrs Dorothy Patterson and then transported by ship to London on 1 January 1770 to be eaten there by Sir Henry Grey and his friends.

(Painted by David Butterell and stitched by Meg Irwin as a kneeler for the church. History courtesy of A & A Meakin)



An A to Z of Bees

A talk by Prof John Hobrough
Wednesday 11 March at 7.30pm
Howick Village Hall : Tickets £4

Prof Holbrough from Warkworth has sixty years experience of beekeeping

Proceeds will go to a new hall heating system and to the Beekeepers Association

Tea & coffee will be available
Doors open at 7pm

LIVE MUSIC @ HOWICK VILLAGE HALL

Sunday 5 April

Martin Stephenson

One of the UK's finest singer songwriters and guitarists of the late 80s & early 90s.

Still making great music!

Doors open 6.30pm for 7pm start

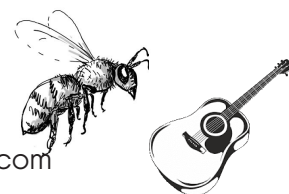
£13/head : Bring your own drinks : 16s & over only

Entry by pre-booking only

To reserve places at both Howick events please contact:

John 01665 576413

E: johnroper1@btinternet.com



BOULMER CAR PARK

The surface of the car park is becoming badly potholed. The parish council will be arranging for it to be repaired.

WINTER WARMER LUNCH

Boulmer Memorial Hall committee is preparing a winter warmer lunch for
Tuesday 25 February at midday

All residents are welcome

For **Boulmer Memorial Hall** bookings contct Bernice McCaig: mccaigb@hotmail.co.uk

SPEEDING IN THE PARISH: THE GRIM NEWS

The parish council is committed to making the roads and pedestrian movement around the parish safe, and is working with the county council's Highways Authority and others to manage the traffic pressures in the area.

We recently commissioned speed measurement strips at a number of points around the parish and the results came back just after the New Year. They show that speeding is a serious problem, particularly on the approaches to Longhoughton village. So much so that the average speeds exceed the guidelines established by the Association of Chief Police Officers. Due to this the results have been referred by the County Council to the Northumbria Safer Roads Initiative.

This is clearly not acceptable, so the parish council will be calling a meeting with the key partners in the next few weeks to develop an integrated plan to resolve this and other traffic issues. It is likely that a series of measures will be needed to address the problems and to make the parish a safer place to walk, cycle, drive and live. As part of this we will obviously be talking to the community. Your views will be critical in helping shape the future of the parish.

Parish Council News

Contd. from p1. Feedback from the recent consultation

Other issues the plan should cover: Transport was a popular issue, particularly to the station at Hipsburn and the suggestion of a tourist shuttle bus from Amble to Bamburgh. More trees and improved habitats for wild life and improved footpaths and cycle routes between the villages were supported. Improved facilities in Longhoughton including the development of the ex-Spar site. The need to deal with speeding traffic and car parking. Creating the opportunities for employment is essential for young people and this will help to balance the ageing population.

Howick to Seaton Point: conservation designations: One resident questioned the existing conservation and protection of the coast and inland.

Please note that the Northumberland coast and its rare species are well protected with world, European and English protection designations. The coast in the parish of Longhoughton, from Howick to Seaton Point, is covered by a world-standard RAMSAR designation that covers wetland species and habitats. It is also classified as a European Special Protection Area (SPA) and a Special Area of Conservation (SAC). Both these designations protect rare and vulnerable birds and regularly occurring migratory species both on the coast and inland. Additionally, in England it is classified as a Site of Special Scientific Interest (SSSI). The whole coast from Holy Island to Amble is of course classified as the Northumberland coast Area of Outstanding Natural Beauty (AONB), meaning that it is given extra protection to conserve the area for its natural beauty, species and habitats.

Neighbourhood Plans: Who is doing them?: The question was raised as to how prevalent are Neighbourhood Plans. Since 2011 when the legislation came in for parish and town councils to do neighbourhood plans more and more have taken up the option. In Northumberland alone there are 9 parishes that have approved plans, with another 6 in the final stages and another 22 in the process of producing a plan. These include our neighbours, Lesbury, Craster, Embleton and Alnwick/Denwick.

Neighbourhood plans are essentially about local issues that are not covered in the Northumberland wide plan, and they are a way of giving the community influence over how land is used. In the preparation of the Longhoughton plan there will be more consultations on the contents of the plan. When we have a final draft plan it will be put out to all households for consultation. Final approval will be in the hands of registered voters in the parish when it goes to a referendum.

Professional help in producing the neighbourhood plan: Some residents questioned whether the parish council has the expertise to draft a neighbourhood plan. The government provides grants for parish councils to engage qualified planners to help write technical parts of the Neighbourhood Plan. In Longhoughton we have appointed Jo-Anne Garrick Ltd. Jo-Anne has extensive experience in planning and advising on neighbourhood plans. She will be writing some of the technical papers needed for the plan and will put together draft policies based on the evidence that has been compiled from the consultations and ward reviews. Northumberland County Council is also giving advice to the parish council on compiling the plan.

Next steps: The Steering Group will review all the comments and views expressed through the consultation and make the necessary adjustments to the vision, objectives and draft planning themes. The next stage of consultation will be the nomination of sites for development including housing, tourism and green spaces. A further round of consultation will take place on these suggestions.

Have your say: It is not too late to complete the consultation questionnaire. Do it on-line at

<https://longhoughtonndp.co.uk/ndp-questionnaire-2020/>



CLIMATE CHANGE ACTION GROUP

Eight residents turned up for the inaugural meeting of the Longhoughton Parish Climate Change Action Group on 27 January 2020. The meeting was spent talking about members' aspirations for the group and what can practically be achieved in the parish. Lots of ideas were put on the table for consideration which will be the focus of the next meeting to take place on **Monday 24 February at the Longhoughton Community and Sports Centre commencing at 7.00pm**. Residents are welcome to attend this important group which is at its formative stage. For more information please contact Adrian Hinchcliffe email adrian.hinchcliffe@btopenworld.com or Peter Bromley email petebrom@hotmail.co.uk

NEXT PARISH COUNCIL MEETINGS

The next meetings of Longhoughton Parish Council will take place as follows:

Monday 10 February at Boulmer Memorial Hall commencing at 7.30pm

Monday 16 March at Longhoughton Community and Sports Centre commencing at 7.30pm.

Longhoughton News

LONGHOUGHTON RANGERS IN MALAWI

Andrew Bottomer, a Longhoughton Rangers coach and PE teacher has been doing impressive work by helping to spread the beautiful game to school children and young people in Malawi. Since 2017 Andrew has had an ongoing sports development project in Chitipa, northern Malawi. In 2017 he trained 50 sports teachers in basic football enabling the teachers to then roll out the training to a further 120 schools with each receiving a football. In 2018 he trained 30 sports teachers from 14 primary schools in basic softball cricket. Kit was donated and now the schools regularly play each other. He supported U12 football with kits and boots. In 2019 he organised a 10-team festival and a three-day youth leadership course in football for 15 youth coaches and provided essential kit, goal posts, balls and boots to further develop the U12 football. In addition Andrew has also coached softball cricket. In 2020 he plans to deliver a five-day training course to teachers in netball, football, cricket and volleyball in Chitipa.

Each year Longhoughton Rangers have given a set of their shirts – so it is amazing to see the Longhoughton Rangers blue and yellow shirts being worn on the continent of Africa. Longhoughton Rangers FC have pledged further support in terms of kit.

Andrew is fundraising at the moment and looking for local support. He has a GoFundMe page. Any contributions are welcome.

<https://www.gofundme.com/f/sports-leaders-chitipa-northern-malawi>



NEW TRUSTEES NEEDED

The Longhoughton Community and Sports Centre is looking for volunteers from the community to become trustees. The role would involve attending committee meetings and contributing to joint decisions on the running of the Centre and ensuring that it meets the needs of Longhoughton residents as the village hall for Longhoughton. We would love to hear from anyone who would like to get involved. If you are interested or would like more information please contact the Secretary, Adrian Hinchcliffe, on 01665 572888 or email adrian.hinchcliffe@btopenworld.com.

LONGHOUGHTON COMMUNITY LUNCH

The community lunch in Longhoughton is going very well and is attended by around 40 people or more each month. It is a social occasion held on the last Wednesday of the month so the next are 26 February and 25 March 2020. We are indebted to the wonderful group of volunteer ladies who put on the lunch and do all the cooking. Without them it would not take place.

BOULMER and LONGHOUGHTON WI

With the festive season over members and visitors were delighted to meet up in the new decade at our January meeting. We were fascinated by our speaker who told us about obtaining a degree in Theatre Practice: Costume Construction at The Royal Central School of Speech and Drama. She showed us samples of her period costumes with fine silk and gold embroidery. We look forward to a Community Information event at our 4 February meeting when we welcome volunteers from Longhoughton 'Paths Plants People', 'Heritage', and 'Dementia Friendly Village' teams to tell us of their work and aspirations. At our 3 March meeting we will try our hand at circular weaving/knitting kits. 7 April is our Annual Meeting when we receive our new programme of events for the first Tuesday of each month

from 5 May to April 2021. Members old and new are always welcome to our friendly monthly meetings in Longhoughton Community & Sports Centre and we look forward to suggestions from all for any new events for our programme; so do just come along and give us a try.

LONGHOUGHTON COMMUNITY AND SPORTS CENTRE

Mondays: **Loose Needles** 1.30pm

Slimming World 4pm & 8.45pm

Tuesdays: **Scouts & Beavers** from 5.30pm

Wednesdays: Longhoughton **Indoor Bowling Club** from 6.30 to 10.00pm

Thursdays: **Zumba** from 5.30 to 6.30pm

Fridays: **Mature Movers** 9.45 to 10.45am

Saturday: **Metafit** 8.00 to 9.00am

Hire rooms for events or family celebrations? Very competitive hire rates. Book on our website.

Get Digital Free 6 week course starting 13 February 10am to 12noon at the Longhoughton Community Centre 01665 572 315

Pilates takes place on Wednesdays at 10.00am at the Beacon

HIRE ACCOMMODATION FOR EVENTS

Hire accommodation for events of all types with very competitive hire rates. Superb new kitchen. Suitable for weddings, birthday celebrations, conferences, meetings, children's birthdays (including football), social nights and much more. Car parking for 60 vehicles. Free WiFi and television.

Book online <http://www.longhoughtoncommunitycentre.org/booking-calendar>

NOTICE OF ANNUAL GENERAL MEETING

The Longhoughton Community and Sports Centre Trust will hold its Annual General Meeting at the Centre on Thursday 19 March 2020 commencing at 7.00pm. All welcome. Come and hear how the centre is doing and our plans for the future.