

# Boulmer Howick & Longhoughton

## CHRISTMAS CHEER

Longhoughton Primary children have kindly agreed to decorate 105 Christmas cards and baubles in the next few weeks (one from every child in the school) which will be delivered around the parish. If you know someone who needs a bit of cheering up then call or text 01665 572315 or 0784338886 to nominate them to receive a card, bauble and Christmas treat. Thank you to the Co-op Community Fund and Alnwick Lions, who kindly donated the materials. We hope to be able to deliver a small Christmas gift along with the Christmas card and bauble. If you would like to donate in cash or kind then please get in touch with Ellie Phillips on the numbers above.



## CHRISTMAS & CORONAVIRUS - anyone need help?

Christmas is fast approaching with what feels like little time after the second lockdown to finish our Christmas shopping and get all those festive chores done. Sadly, some people may feel even more isolated than usual this year due to Covid restrictions. Not being able to travel to family or for them to drop in to visit during the festive season may really take its toll on a person's wellbeing. The parish Covid-19 volunteer group would like to reach out to people in the shielding category, those feeling vulnerable, people who live alone with no or few social connections, families hit by job loss due to the coronavirus or carers struggling due to minimal support or respite.

If you know of someone locally who could do with a helping hand, a food parcel or just someone in need of a chat then please contact the volunteers via Ellie Phillips on 01665 572315/07843380886. If we can't help, then we know someone who can.

## CHRISTMAS WINDOW AND GARDEN DISPLAY COMPETITION FOR LONGHOUGHTON

Sadly, coronavirus has put paid to the Longhoughton Christmas Tree and Lights Festival this year, but that shouldn't stop bringing some light into our community over the festive season. **Contd. p2/**



# Longhoughton Parish Council

### Boulmer Ward

Adrian Hinchcliffe (Vice Chair)  
01665 572888

2 Vacancies

### Howick Ward

John Haughie 01665 577020  
1 Vacancy

### Longhoughton Ward

Jacqueline Barras 01665 577824  
Peter Bromley 01665 577071  
Kris Cochrane 01665 572923  
Carole Green 01665 572610  
Ellie Phillips 01665 577563  
(Chair)

### County Councillor

Wendy Pattison 01665 579137

### Parish Clerk

Elizabeth Taylor 01665 830040  
parishclerk@hotmail.com  
[Please contact the Clerk about the parish councillor vacancies.](#)

### Websites

[northumberlandparishes.uk/longhoughton](http://northumberlandparishes.uk/longhoughton)  
[www.longhoughtonndp.co.uk](http://www.longhoughtonndp.co.uk)

### Newsletter Editors

Adrian Hinchcliffe  
adrian.hinchcliffe@btopenworld.com  
Ellie Phillips  
eleanorphillips1@gmail.com  
Chris Thomas (Design)  
chrismerrylaythomas@gmail.com

Please let us have your newsworthy items for the next edition before the next **deadline on 21 January 2021**. Thank you.

Disclaimer: The Boulmer, Howick and Longhoughton Community Newsletter is published by Longhoughton Parish Council. The views expressed represent the understanding of the editors or of any named person contributing to the newsletter.

## Parish News

**Contd. from p1** / Goodness knows we all need cheering up. There will still be prizes for the **Best Window** display and the **Best Garden** display. Judging will take place on Sunday evening 13 December. So let's get twinkling!



Space for Shorebirds is a new coastal wildlife ranger service set up by Northumberland County Council, which operates on the coast between Seaton Sluice and Berwick-upon-Tweed, with the objective of reducing the impact of recreation upon our internationally important shorebird populations. Our

shorebirds such as curlew, purple sandpiper and ringed plover are in real need of help as nationally their numbers have declined rapidly over the past 25 years. These birds are so dependent on a thin zone of intertidal habitat to find food, such as worms and crustaceans. Repeated disturbance reduces their time spent feeding and resting, which can affect their chances of survival. Rangers will be out regularly at Boulmer talking to residents and visitors, sharing information about the lives of the shorebirds and how we can help. If you see them on the coast, please say hello! Please remember to give Space for Shorebirds.

## CLIMATE CHANGE CARBON EMISSIONS TOOL

The Centre for Sustainable Energy (CSE), based in Bristol, has been in contact with the parish council. They are developing a tool for use by parish councils and local communities to estimate baseline carbon emissions for their area. This will be calculated using information about energy use, travel behaviour and the consumption of goods and services modelled at household level and scaled up to reflect individual communities.

CSE are looking for parish councils and other groups to get involved in testing the tool and then to use it for its intended purpose. This information was circulated to the Climate Change Group and a member has volunteered to help with testing and developing the tool once it is available. The demonstration of the tool will take place on Tuesday 12 January 2021.



Dunlin feeding on seaweed

## LONGHOUGHTON & BOULMER WOMEN'S INSTITUTE

Last September our members were really looking forward to recommencing their monthly Tuesday evening meetings face to face in the newly refurbished function room of the Covid-19 regulation ready Longhoughton Community & Sports Centre but the dastardly virus and the necessary safety distancing rules returned and so our members have tried to continue to keep in touch by



telephoning, emailing and Zooming. Fortunately the cancelled speakers and planned events on the year's programme all agreed to just postpone and remain ready to make new programme arrangements when we can all meet again face to face. Our National and Northumberland Federations also remain ready to rearrange their postponed events while hoping members show the strength and fortitude that is synonymous with the WI. We all wish that our fellow members, their families and everyone, may stay safe as well as find happiness and peace this Christmas and New Year.



## Parish News

### LESBURY TO LONGHOUGHTON GREENWAY

The group working on the greenway proposals has reported to the Lesbury and Longhoughton Parish Councils along with the RAF. The RAF would like an off-road link between the two RAF sites. Good progress has been made in producing the draft report and the group has taken guidance from the county council, Sustrans, British Cycling and a cycling specialist who has extensive experience in designing greenways. It is hoped that the group will soon be able to start having discussions with the landowners.

### NEIGHBOURHOOD DEVELOPMENT PLAN

Gradual progress is being made with the Plan despite the delays caused by Covid-19. A third version of the background paper dealing with second and holiday homes has been received. This contains a proposed policy for the plan that any new housing in Boulmer should have a legal requirement for permanent occupation. This means that the properties cannot become second homes or holiday lets. Over time this will help to re-balance the Boulmer community where 38% of properties are second homes and holiday lets.

The Design Code being developed by AECOM will be available in draft by early December. This is a key document for the Neighbourhood Plan and will establish comprehensive standards for all development in the parish.



### CHRISTMAS SERVICES AT ST PETER AND ST PAUL'S CHURCH

The churches are planning a 10.30am family service in Longhoughton Church on Christmas Day, and a 10.30am Christmas communion service in Howick Church. You will be most welcome at these services.

Sadly, we do not think it will be possible to hold the usual Crib Service on Christmas Eve, but the church will be open for you to see the crib and hear some Christmas carols.

It is hard to forecast what our coronavirus restrictions will be at Christmastime. Please watch the church noticeboard for updates.

Whatever happens, we wish you all a happy, healthy and peaceful Christmas.

### LONGHOUGHTON COMMUNITY & SPORTS CENTRE

Longhoughton Community & Sports Centre has been chosen for this year's Co-op Community Fund. The Centre is a registered charity and a local community asset - we really need your support to help raise funds to provide some new activities at the Centre. Will you help please by making us your chosen charity? Every time you spend money on Co-op products or services 2p for every £1 spent is added to your account. The Co-op will add the same amount to the local cause that you have registered for - hopefully you choose the Community and Sports Centre!

If you are already a Co-op member you can choose the Community and Sports Centre by using the Co-op App and pressing the Membership button or visit the website [www.coop.co.uk](http://www.coop.co.uk). If you are not a Co-op member - Join here: <https://www.coop.co.uk/membership>. We applied to this fund to help us provide outreach Warm-Hub activities such as gardening with vulnerable adults, healthy eating activities, exercise and women's health programme and a community textile project. The money raised will help buy gardening equipment, planters. Scales and BP equipment will be purchased for the women's health programme. Some of the funds will also go towards creating a community film club. Our healthy eating, exercise and mindfulness activities are all aimed at helping residents come out of lockdown with the positive support to help them feel physically and mentally healthier and to signpost them to activities which may interest them. We will actively encourage residents to join our existing activities such as indoor bowls and Zumba as well as the planned new events with your support.

**The Community Centre is run entirely by volunteers so every penny raised goes straight back into developing activities and services to enhance our local community.**



## Parish News

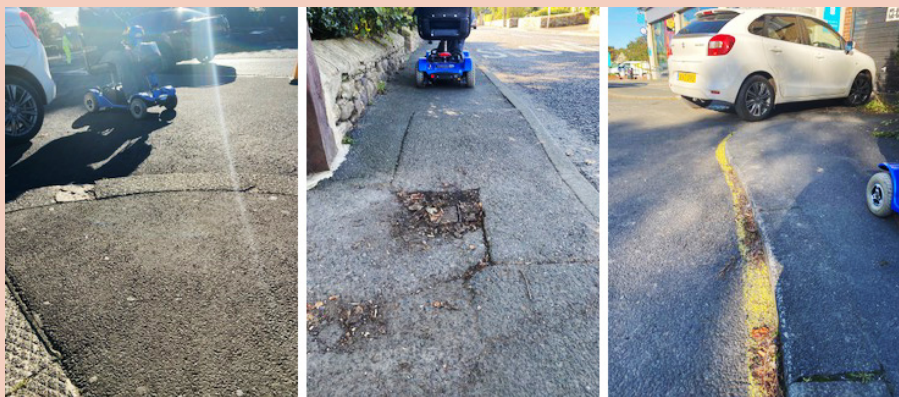
### VOLUNTEER TREASURER SOUGHT

Longhoughton Community and Sports Centre is looking for a volunteer to take on the role of Treasurer. This is an opportunity for someone who is numerate and enjoys being involved in financial operations. The Treasurer will be a trustee of the Centre and will be a Board member. The role takes up only a few hours each week. Some knowledge of accounting would be an advantage but not essential.

If you would like to find out more about the role please contact Eleanor Phillips, Chair of Trustees on 01665 577563 or email [eleanorphillips1@gmail.com](mailto:eleanorphillips1@gmail.com)

### TRYING TO IMPROVE ACCESS AROUND LONGHOUGHTON

The Parish Council has submitted a request to the County Council asking for improved pavements throughout Longhoughton including dropped kerbs. Chair of the Parish Council, Ellie Phillips, inspected the pavements throughout the village and was accompanied by a resident on a mobility scooter. They identified numerous obstacles on the pavements that make it very difficult for people restricted to wheelchairs or mobility scooters to move about including older people who are dependent upon sticks and other walking aids. These obstacles included the lack of numerous dropped kerbs, narrow pavements, overhanging hedges, uneven and sloping pavements. In some instances wheelchairs and mobility scooters have no choice but to leave the pavement and go on the road.



In sending the requests for improvements to the county council Ellie said, "Disabled persons and an increasing number of elderly people in Longhoughton need easy access to the main amenities throughout the village. Well-maintained pathways and dropped kerbs are crucial and this is a key component of an inclusive community."

### RECONSTRUCTION OF THE HOWICK BURN BRIDGE

Northumberland Estates have very kindly supplied the timber for the reconstruction of the bridge. The parish council is now obtaining quotes for the bridge to be constructed in accordance with safety standards. It looks like it is going to cost over £2,000. The parish council is looking at options for raising the funds.

The permissive footpath from the north end of Longhoughton that leads down to the Burn mouth is well used by Longhoughton people.

### HOWICK VILLAGE HALL GOES GREENER

These are worrying times for village halls with closure meaning no income and bills to pay. But the trustees at Howick decided to continue their refurbishment programme whilst the hall is closed. With grateful thanks to Community Action Northumberland and The Big Lottery Community Fund we secured a grant of £30,000 just weeks before the lockdown occurred. We have now completed roof insulation, solar panels and new electric heating. The hall is toasty warm and looking smart after the decorators (R & J Sleightolme) complete the makeover. Our hall is a vital part of our community and thanks also go to all our visitors throughout the last year who have supported us, helping us to raise funds for this work. We hope to see you all safely, very soon.

### BOULMER CAR PARKING ISSUES

The Parish Council is awaiting a response from the county council on a number of discussions about new off-street parking that have been held over the last two months. We are also waiting for the outcome of the residents' survey undertaken by the county council on possible parking restrictions throughout Boulmer. Parking is still an issue even in mid- November. When the sun shines the car park overflows and the village street fills up with parked cars. Let's hope that a solution can soon be found!