

# Boulmer Howick & Longhoughton



## TEDDER PLAYPARK

### MAJOR IMPROVEMENTS TO PLAY FACILITIES IN LONGHOUGHTON

An exciting project has been set into action by RAF Boulmer to modernise the Tedder play park for the use of all children in Longhoughton Parish. Currently the playpark is under-utilised as much of the equipment is no longer fit for purpose, and inappropriate as a multi-age use space. The playpark was installed over 10 years ago and has not been updated since then. With new housing built within the village and the relocation of serving personnel to the area, this play facility will become the main playpark for Longhoughton. In consultation with Proludic, the playpark contractor, a plan has been drawn up to improve and restructure the playpark to best support the community needs by separating the areas into age-related zones, with dedicated areas for under-8s juniors and teens, and will include age appropriate and disabled access equipment. During the construction we also took into account the Parish Plan Survey conducted by the Parish Council. Within this the village overwhelmingly supported the need for a Multi-Use Games Area (MUGA) in order to allow games such as football, hockey, netball and basketball to take place in the village. The MUGA will be sited within the playpark forming part of the teen-zone area. This major refurbishment has been made possible with support given to this project by the RAF Benevolent Fund which donated 61%, Longhoughton Parish Council 26%, and RAF Boulmer 13%. Planning permission has now been approved and Proludic hope to start work on the project at the end of February/beginning of March, and should complete in early May, weather permitting of course!

## LESBURY TO LONGHOUGHTON GREENWAY

A proposed route for the Greenway has been discussed with Northumberland Estates. Once the route is finalised a design will be produced to enable the project to be costed. There will be a consultation with residents on the proposed route. The Greenway will be available for walkers, cyclists and horse riders.

# Longhoughton Parish Council

### Boulmer Ward

Adrian Hinchcliffe (Vice Chair)  
01665 572888

2 Vacancies

### Howick Ward

John Haughie 01665 577020  
1 Vacancy

### Longhoughton Ward

Jacqueline Barras 01665 577824  
Peter Bromley 01665 577071  
Kris Cochrane 01665 572923  
Carole Green 01665 572610  
Ellie Phillips 01665 577563  
(Chair)

### County Councillor

Wendy Pattison 01665 579137

### Parish Clerk

Elizabeth Taylor 01665 830040  
parishclerk@hotmail.com  
[Please contact the Clerk about the parish councillor vacancies.](#)

### Websites

[northumberlandparishes.uk/longhoughton](http://northumberlandparishes.uk/longhoughton)  
[www.longhoughtonndp.co.uk](http://www.longhoughtonndp.co.uk)

### Newsletter Editors

Adrian Hinchcliffe  
adrian.hinchcliffe@btopenworld.com  
Ellie Phillips  
eleanorphillips1@gmail.com  
Chris Thomas (Design)  
chrismrlaythomas@gmail.com

Please let us have your newsworthy items for the next edition before the next **deadline on 21 March 2021**.  
Thank you.

Disclaimer: The Boulmer, Howick and Longhoughton Community Newsletter is published by Longhoughton Parish Council. The views expressed represent the understanding of the editors or of any named person contributing to the newsletter.

## Parish News

### ANYONE NEED HELP?

If you know of someone locally who could do with a helping hand, a food parcel or just someone in need of a chat then please contact the volunteers via Ellie Phillips on 01665 572315/07843380886. If we can't help, then we know someone who can!

### LONGHOUGHTON, BOULMER AND HOWICK DEVELOPMENT PLAN

The Design Guide for the whole Parish has now been completed. This is a huge piece of work, paid for by the Government. Once the Development Plan is approved it will be a guide for all developments in the parish that need a planning application. The Steering Group is also working on identifying Local Green Spaces which are equivalent to 'green belt' and Protected Open Spaces which we wish to preserve. The Plan covers the period up to 2036 so we are assessing a number of sites for house building. Once the proposals that are currently being worked on are complete the Steering Group intends to conduct a full consultation with residents and statutory bodies.

### MEMBERS SOUGHT FOR NEW CHARITY

The Parish Council has approved proposals to create a charity to benefit the community within the parish. The suggested name for the Charity is LBH Community Trust, short for Longhoughton, Boulmer and Howick Community Trust. The charity is being set up to apply for funding for various projects and community groups that the Parish Council cannot access. The Parish Council wants the charity to have firm foundations in the community that it serves; therefore the constitution will provide for residents to be members. The role of members will be to approve the annual report, approve the annual accounts, appoint the auditor, and most importantly to appoint the Trustees. We are therefore looking for a good number of residents to become members. If you are interested or would like more information please contact Adrian Hinchcliffe, telephone 01665 572888 or email [adrian.hinchcliffe@btopenworld.com](mailto:adrian.hinchcliffe@btopenworld.com).

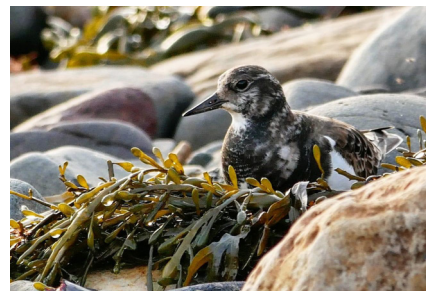
### LONGHOUGHTON AND BOULMER WOMEN'S INSTITUTE

Although the national lockdown means all physical meetings continue to be suspended, WI friends try to keep in touch by telephone, internet and even 'Zoom' and hope everyone remains in relatively good spirits. During recent weeks members were considering their choices of National WI Resolutions and which one they would like to go forward to the National WI AGM at the Royal Albert Hall, currently planned for April 2021. It is hoped plans can go ahead for one of our members to attend this London meeting, representing our own and other local WIs. This year's resolutions cover such varied topics as women's health, environmental issues and racial discrimination; the final vote will result in future campaigns being prepared. It is also planned for some of our members to represent our own WI at the Northumberland Federation of WIs Annual Council Meeting in Newcastle, should it go ahead in April. Our own WI's programme of future events is ready to be back in place as soon as COVID infection rates come down and the virus is under control. Meanwhile it is hoped all our members and their friends and families stay safe, connect with each other when they can, and that our face-to-face meetings can recommence soon in Longhoughton Community Centre.

### SPACE FOR SHOREBIRDS

In the middle of winter our shorebirds are utilising the daylight hours to find enough food to keep them fit and healthy. Stormy conditions are resulting in large mounds of seaweed washing up on the beaches, and when left to rot they become full of insects like sandfly larvae which make up a significant proportion of shorebirds' diet. Birds gather in large numbers to feast on this easy food source, so look out for them at Boulmer and Seaton Point, and please give them plenty of space to feed undisturbed. A big part of our service is our Dog Rangers! They help us to protect coastal wildlife by taking the pledge to not get too close to wildlife and never chase the birds. If your pooch loves a walk along the beach but also wants to protect the shorebirds, we'd love to hear from you!

Turnstone at Seaton Point





## Longhoughton News

### WE NEED TRUSTEES!

Do you want to be part of the team, managing your local Community and Sports Centre? We need people who are positive and committed to managing an exclusively volunteer-run charity. As a trustee you will play a vital role in setting our direction, contributing to overseeing the work and management of the centre and working with us to improve what we currently offer. Becoming a trustee will enable you to be part of an organisation that reaches into and across the community through our outreach and community projects and a wealth of activities. Longhoughton Community and Sports Centre is a local asset offering a number of regular groups and services that benefit the whole community. Your community centre is the place to find interesting activities on your doorstep. The Centre is used regularly during non-lockdown times as a place for learning, sport, fitness, celebration, socialising, sharing food together, volunteering and much more. Put simply, we aim to bring people together to transform lives, enhance community spirit and most importantly have fun! If you have a little bit of time to spare we will offer you a very warm welcome and if you can give some time more regularly we would love you to become a trustee of the centre. There are six trustees and there are currently six vacancies. If you would like to get in touch for more information about becoming a trustee call 01665 572315 or email us at [enquiries@longhoughtoncommunitycentre.org](mailto:enquiries@longhoughtoncommunitycentre.org)

## Boulmer News

### TRAFFIC RESTRICTIONS

The County Council were very disappointed that only 27% of residents responded to the recent consultation on parking restrictions. They said that there was consensus on only two things. One was the need for a new off-road car park and secondly, replacing the 'no waiting' cones with double yellow lines. The Council has now written to all households asking if they will support double yellow lines to replace the 'no-waiting' cones. It is hoped that there will be a good response to this consultation.



### CAR PARK

Following the recent rain and frost the surface of the car park is very potholed. At the January meeting of the Parish Council it was agreed that it should be repaired.

## Howick News

### RESIDENT RECEIVES AWARD

Mandy Fall of Howick has recently received a national award for making an outstanding contribution to marine conservation and furthering the work of Wildlife Trusts. She lives close to the coast at Howick and has a keen interest in marine life and conservation. In fact she has recently completed a level 3 diploma in Marine Conservation. Mandy volunteers as a Marine Medic for British Divers Marine Life Rescue and is a beach warden for the Marine Conservation Society. She has been working hard with a team of Coast Care volunteers to remove fishing waste from the beaches around Howick and recently removed 408 kgs including heavy rope. Mandy is very modest and maintains that the award is to recognise the team of people who are involved in marine conservation. Well done Mandy, it is really good to see people volunteering to clean up our beaches from seaborne waste.





## Parish News

### THE RAMBLERS: DONT LOSE YOUR WAY CAMPAIGN

The Longhoughton walking group received an email from the Ramblers last month, thanking us for our support with their 'Don't Lose Your Way' campaign. They recently announced that they had found 49,000 miles of paths, which could be lost forever, unless we come together to save them. We were one group among many around the country who found paths in our area by comparing older maps with current OS ones. The email said that they were excited to reveal that the detailed map of lost paths is now available. The national map will help with prioritising and claiming paths ahead of the deadline in 2026.

They ask us to keep in mind that if a path appears on the map, it doesn't necessarily mean you have the right to walk on it yet and that we won't have identified every single lost path. At the next stage, the paths will be prioritised with a focus on the ones which bring the most benefit to the path network. For paths that they want to save, they will need volunteers to collect enough evidence to show that they were used by the public in the past - this simply won't be possible for all paths. Our local walking group may well volunteer to help with the task in our area. Below is the Ramblers' lost footpaths (in blue dashes) map for our area, taken from the national one on the Ramblers' website. The next steps for them are to prioritise, research and apply for the relevant paths to be restored ahead of 2026.

