

Boulmer Howick & Longhoughton

THE QUEEN ELIZABETH PLATINUM JUBILEE CELEBRATION

Great news! The RAF has agreed to combine their Families Day with the Big Lunch Celebrations proposed for Longhoughton. This will make the event much larger with interest for all the family. A RAF representative has joined the Organising Committee and the event will be called The Queen Elizabeth Platinum Jubilee Celebration.

The event will be held on the public holiday on **Sunday 5 June 2022 at the Longhoughton Community and Sports Centre from 11.00am to 5.00pm**. It will incorporate the Big Lunch picnic and there will be three food vans and lots to drink including a licenced bar. Entry will be **free** and most of the entertainments will also be **free**. So, please **put this in your diary for the Spring Bank Holiday weekend**.

ENTERTAINMENTS: Live and recorded music; assault course; Rodeo Bull; kid's disco dome; falconry display; Little Movers; dodgems; fairground rides; climbing wall; exotic animals display; face painting; balloon artist; children's races, welly wanging; penalty shootout; arts and craft display; local history display, memories of the Queen; decorations; dog show; children's art competition, creative art display. **Group photograph.**

FOOD: Fish and chips, chicken shawarma, pizza, hot and cold drinks, cakes, and you can bring your own picnic.

This is an event for all the family and not to be missed. Let's celebrate what Queen Elizabeth has done for us all.

Put it in your dairy now!

THE LAST 70 YEARS

IN LONGHOUGHTON, BOULMER AND HOWICK

As part of the Jubilee celebrations the Parish Heritage Group will be looking back at how our villages have changed since the Coronation, and need your help. If you have any photographs or anecdotes from the last 70 years we would love to showcase local stories at **The Queen Elizabeth Platinum Jubilee Celebration** along with maps and newspaper stories. Did you get married on the day of the jubilee? Were you christened on the day or the coronation? Travelled on the last train through a station? Moved schools from Howick or Boulmer to Longhoughton? Did you enter the Miss Longhoughton competition? We would love to read your memories and photographs. Please get in touch with us at longhoughtonheritage@gmail.com.

Do you remember any of these news stories?

DECEMBER 1955: The Ancora was left high and dry on the rocks north of Boulmer but with little damage and was re-floated by discharging part of its cargo of sand.

JUNE 1958: The Longhoughton Over 60's Club put on a Miss Longhoughton beauty competition in Alnwick as part of a fundraising evening with a live band. First, third and fourth prizes went to girls from Embleton, including the winner, Agnes Johnson and her sister Catherine.

Longhoughton Parish Council

CONTACT YOUR COUNCILLOR

Boulmer Ward

Adrian Hinchcliffe (Chair)

01665 572888

Caroline Bradshaw 07979 594987

Howick Ward

2 Vacancies

Longhoughton Ward

Jacqueline Barras 01665 577824

Peter Bromley 01665 577071

(Vice Chair)

Bryan Ellis 01665 577973

Carole Green 01665 572610

David Hindson 01665 577829

Katie Middlemist

middlemistk@icloud.com

County Councillor

Wendy Pattison 01665 579137

Parish Clerk

Elizabeth Taylor 01665 830040

parishclerk@hotmail.com

Please contact the Clerk about the parish councillor vacancies.

Websites

northumberlandparishes.uk/longhoughton

www.longhoughtonndp.co.uk

Newsletter Editors

Adrian Hinchcliffe

adrian.hinchcliffe@btopenworld.com

Ellie Phillips

eleanorphillips1@gmail.com

Chris Thomas (Design)

chrimerlaythomas@gmail.com

Newsworthy items for the next edition, before the

deadline on 21 May 2022, please.

Disclaimer: The Boulmer, Howick and Longhoughton Community Newsletter is published by Longhoughton Parish Council. The views expressed represent the understanding of the editors or of any named person contributing to the newsletter.

Parish Council News & Views

JUNE 1963: The whole parish of three villages and the RAF jointly put on a barbeque and dance at Pasture House, in aid of Alnwick Carnival Week. Music was provided by the Cheviot Ramblers and it must have been misty as the newspaper headline was 500 dance in the Mist at Longhoughton.

AUGUST 1985: The Burnside Inn was established, the first pub in Longhoughton village for over 100 years (since 2014 the site has been used by the Co-op). Were you a regular?

JULY 1993: A singing group gave three performances of folk songs on Sugar Sands Beach. They came from Bulgaria and group members were aged between 40 and 70. The concert was filmed as part of a larger piece of work. Did you attend and remember the bell-like quality of their singing?



In April we say goodbye to the shorebirds we have been watching on the Northumberland coast over the past few months and welcome back those returning to breed on our beaches. Throughout the spring and summer, with the help of Coast Care volunteers, we will be surveying the coast for breeding ringed plovers and protecting

their vulnerable nests with fencing and signage. The breeding population of ringed plovers is red-listed for conservation concern and the birds face many threats including habitat loss, increased recreational use of the coast and predation. Please help us protect them by looking out for nest protection areas during your visits to the coast and give them space to avoid causing disturbance to the nesting birds.

You can follow our social media pages for updates about the birds throughout the nesting season. Simply search for Space for Shorebirds on Facebook, Instagram and Twitter.

Picture: **A Ringed Plover photographed at Embleton**



STORM ARWEN

Longhoughton Parish Council has made a submission of evidence to the major review of the Storm Arwen being undertaken by the County Council. The submission includes sections on the need to strengthen the robustness of the distribution system; an improved tree lopping regime; the need for significant improvements in communications; the need for Emergency Centres; better recognition of residents at risk; compensation and the role of Parish Councillors in emergency situations. The full submission can be seen on the Parish Council web site.

COMPENSATION: If you have not yet received compensation for Storm Arwen – do not give up. There are many people like you. Call NCC on 105 or 0800 028 9517.

LONGHOUGHTON PARISH COUNCIL MEETINGS

The next two meetings will be held on the following dates at the Longhoughton Community and Sports Centre commencing at 7.35pm: Monday **25 April 2022** and Monday **16 May 2022**.

THE NAME OF THE AONB

One of the recommendations of the Glover Report that looked into special areas such as Areas of Outstanding Natural Beauty and National Parks, suggested that they should all be given a new name which would be National Landscape. The Northumberland Coast Area of Outstanding Natural Beauty would become The Northumberland Coast National Landscape. Does anyone have any views on this change?

THANKS TO THE DELIVERY TEAM

Many thanks to the 17-strong delivery team for delivering the medical questionnaire and this Newsletter. Your efforts are much appreciated.

VACANCIES FOR TWO PARISH COUNCILLORS

Following the resignation of John Haughie from Longhoughton Parish Council, Howick is no longer represented. The PC would like to thank John for his service to the residents of the Parish and particularly Howick. John has been a member of the Parish Council for many years and has given service as its chair.

Both seats are now vacant. The Parish Council would like to fill them so that the people of Howick are fully represented. The Parish Council has a full programme of change over the next few years including completing the Neighbourhood Plan, delivering community needs and facilities and conducting consultations. The programme will also include our local response to climate change and communications such as this Newsletter. The Parish Council meets ten times each year. All Parish Councillors are volunteers.

If you are interested or would like more information please contact the Parish Clerk, Elizabeth Taylor on 01665 830040. You will be very welcome.

WANTED!

TWO COUCILLORS TO SERVE HOWICK

A DESIRE TO REPRESENT PARISHIONERS IS MORE IMPORTANT THAN WHERE YOU LIVE

[See Details Above](#)

HOWICK BURN BRIDGE AND THE PERMISSIVE FOOTPATH

The landowners have been contacted and the AONB Officer has been re-consulted and an agreed way forward has been finalised. The Permissive Route will be re-directed through the Cherry Wood and the route will hopefully be cleared by Coast Care. The bridge will be the subject of the funding bid to the Farming in Protected Landscapes fund, which will also cover some gates, fencing and stiles.

News From Community Organisations

BOULMER AND LONGHOUGHTON WOMEN'S INSTITUTE

Our March speaker was Anne Marie Carter from the Alnwick Soap Company who gave an interesting talk on how she got started. Mary won the fragrant flower competition with her sprig of lavender. A group of members enjoyed a visit to the Wedding Gown Exhibition at Newcastle Cathedral. There will be a coffee morning at The Playhouse and a walk in Warkworth and a theatre visit to The Playhouse. Some members are making pennants for the Queen's Platinum Jubilee Northumberland bunting. Our April meeting will be the AGM. Contact Alison for further details on 07837271882.

BOULMER BOOK SWAP IDEA

Anyone in Boulmer interested in setting up a book swap in the village? If so, please contact Chris Robinson on 07837 724277

BOULMER SETTLEMENT BOUNDARY

Thank you for those who responded to the Boulmer settlement boundary consultation. All responses were in favour. It will now go into the Neighbourhood Plan. The proposal for a Settlement Boundary for Longhoughton is being worked on and will be put out for consultation in a few months time.

PROTECTING THE DUNES AT SUGAR SANDS AND HOWDIEMONT BEACHES

Following the commentary in the February newsletter, stage one of the changes to protect the ecology of the dunes will be in place by the end of March. This will be to reduce the area for parking. The next stage to put in place a ticketing system is still being investigated along with the provision of an overflow car park at the Longhoughton end of Crowlea Road. More information will be given as soon as possible.

HOWICK ART GROUP EXHIBITION

We're back!!! **ART EXHIBITION** Howick Village Hall
Early May Bank Holiday **30 April, 1 and 2 May 10am to 5pm**

Northumbrian artists over 100 original art works and prints greetings cards wide range of styles and media REFRESHMENTS

www.howickartgroupnorthumberland.com



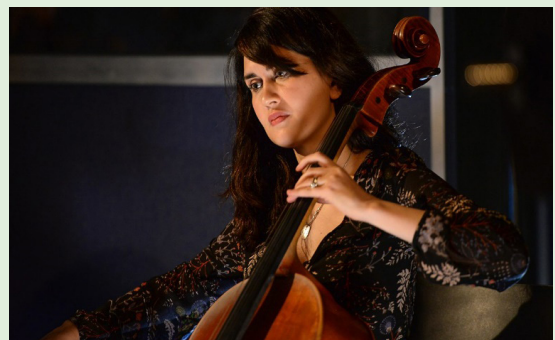
Howick Art Group is extremely grateful to Longhoughton Parish Council for their generous grant of £200 which will provide the group with the opportunity to resume its programme of workshops following their disruption due to covid .

STABLEYARD FESTIVAL @ FALLODON HALL NE66 3HF

SATURDAY 16 JULY 2022

**JAMES GRANT
& THE HALLELUJAH STRING QUARTET**

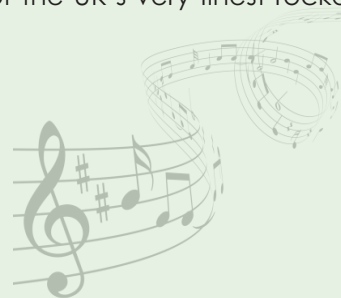
James Grant, ex singer, lead guitarist and songwriter for Glasgow soul pop band Love and Money is one of the most renowned and respected performers Scotland has ever produced. Drawing from a broad palette of pop, folk, soul, country and blues influences, and interweaving his solo compositions with Love and Money favourites, James twins darkly literate, melodically lush songcraft with his richly potent vocals and virtuoso guitar work. A very rare chance to see James perform with the Hallelujah String Quartet outside of Glasgow, Edinburgh and London.



Supported by: Miss Mary & the Mr Rights, NE based authentic Rock 'n' Roll and Rhythm 'n' Blues Band including Miss Mary on vocals, upright bass, saxophone, drums, and one of the UK's very finest rockabilly guitarists Joe Guilan.

Preliminary Timings: (tbc)

12.30pm	Doors open
2pm - 4pm	James Grant & The Hallelujah Quartet
4pm - 5pm	Picnic in private gardens
5pm – 6.30pm	Miss Mary & Mr Rights
£25/head	<i>Bring own picnic, drinks, chairs & brollies</i>
	12s & over only Sorry no dogs



Tickets strictly paid in advance : None available on the day : Advise early booking

Contact John: Mob: 07905696555 E: johnroper1@btinternet.com

Longhoughton News

ALNWICK MEDICAL GROUP LOCAL SURGERY

Thank you to the 164 residents who completed the questionnaire. The results are as follows:

Those *in support* of having medical services in Longhoughton 158

Those *against* having medical services in Longhoughton 6

In addition you gave compelling evidence of why the surgery should be retained in Longhoughton and the difficulty that you have experienced since it closed in March 2020. The full result of the consultation will be included in the Parish Council website and on the noticeboards.

The results of the survey will be sent to Alnwick Medical Group and the Clinical Commissioning Group. A meeting to discuss the result and the compelling case to retain Longhoughton surgery will be requested.

The reason given for closing the existing surgery is that it is not fit for purpose which everyone agreed with. However, there is space at the Longhoughton Community and Sports Centre where a lottery grant has been obtained to convert two unused changing rooms into a usable space of 64 square metres. This would be on the north side of the building and would have its own external door and windows and be right beside the overflow car park. This could be designed to an Alnwick Medical Group specification.

WAR MEMORIAL IN LONGHOUGHTON

The correspondence on this seems to have dried up. There were about equal numbers in favour and against. If there are no further comments or suggestions then perhaps the status quo should be allowed to prevail.

LONGHOUGHTON COMMUNITY AND SPORTS CENTRE

Community Luncheons

Wednesday April 27 and Wednesday 25 May. To reserve a place please phone 577973

Over 70? Need some space to talk confidentially?

A free psychotherapeutic counselling service has been made available for people aged 70+ at Longhoughton Community and Sports Centre.

The service can be used by anyone experiencing difficulty in coping with everyday life, having feelings of being overwhelmed or dealing with the loss of a friend or family member. Perhaps retirement has not turned out the way you had hoped and the loss of your career is not easy to come to terms with, or you feel lonely, scared, anxious or depression in these ever changing, uncertain times.

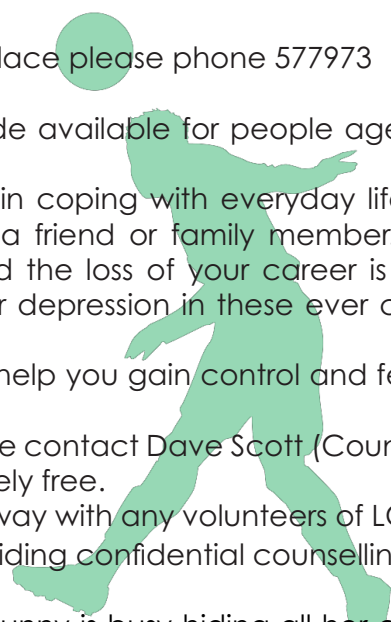
These are all very real reasons to talk to someone trained to help you gain control and feel better day by day.

For more information on how this service might help you please contact Dave Scott (Counsellor) on 07542 507857 for a confidential chat. All sessions are completely free.

Please be assured that no personal details are shared in any way with any volunteers of LCSCT. Our venue is privately booked by Mr Scott for the purpose of providing confidential counselling.

Easter Egg Hunt and Easter Bonnet Competition

Attention all littlies! On Saturday 16 April 12-1pm the Easter bunny is busy hiding all her chocolate eggs and other goodies all over the community centre grounds – it's your job to find them all – so hop along, bring your easter basket and a big person too for some Easter fun! Some lucky egg-



hunters may also find a golden ticket for an extra surprise! There will be a small prize for everyone wearing an Easter bonnet too, so get colourful! Please arrive in good time at the front door of the centre to set off on your egg-hunt at 12 noon or you may get bunny-hopped!

Spring Community Litter Pick Saturday 23 April 10.00 to 11.30am

Calling all village Wombles! Let's give the village a bit of a spring clean – pickers and bags will be supplied – just bring some gloves and a drink with you, it's thirsty work! Please meet in the carpark. All children should be accompanied by an adult. Prizes will be awarded to the boy and girl who finds the most unusual object – we've had lots of interesting ones in past years! Free refreshments and biccies will await your return.

Youth Groups at the Community Centre

Welcome back 1st Longhoughton Scouts! Thanks to scout leaders Mike Keith and CarrieAnne Field, 1st Longhoughton Scouts have returned to the village on Wednesday evenings 6.30-8pm after a two-year absence. The Scouts are one of two youth organisations now using the community centre – 1st Longhoughton Brownies meet on Monday evenings 6-7.30pm. Week in and week out we have over a hundred children in nine football teams training in all weathers and having fun - that's all down to the dedication and coaching skills of many adults from our award-winning home team, Longhoughton Rangers Football Club and others keen to encourage discipline, fitness, football skill and team working amongst young people, which will hold them in good stead in the years ahead. Well done LRFC!

Autumn/Winter Event Planning

We'll publish full details in future newsletters but just to give you a sneaky peak into what's planned already in plenty time to put in your diary– Northumberland Touring Company are back in the village with the Scottish Play (shoosh...Macbeth!) on 16 September. We have a band night organised on 15th October followed by an 80's disco on 29 November. We have a very special production by NTC for the children on 18 December – Wind in the Willows ...you're never too old to come along!

Fancy volunteering?

Our community centre is entirely run by volunteers who give their time for the good of the community. If you are community-minded and have a little bit of time to offer then please get in touch – we'd love to hear from you. We have a number of significant projects in the pipeline at the moment and are particularly looking for individuals with an interest in project management; building maintenance; website and Facebook management and event/ party planning. However we will welcome you with open arms if you are able to give just a little bit of your time on a regular basis to help occasionally with little jobs such as litter pick, outreach work with older people, opening /closing up the building for users – we have a myriad of tasks to suit all. Please call Ellie Phillips (Chair of Trustees) on 01665 572315 or email: enquiries@longhoughtoncommunitycentre.org

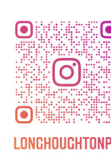
EVENTS AT THE RAF BEACON COMMUNITY CENTRE IN APRIL

- Every Tuesday: Mindfulness & Mobility: 1000-1045.
- 3 x Tuesday's per month: Bingo: 1900 doors open.
- First Tuesday of the month: WI Forum: 1930 start.
- Every Wednesday - Coffee Morning: 1000-1200.
- Every Wednesday - Military Wives Choir: 1930-2100. (exc. school holidays)
- Thursday - Music Bugs: 1300-1500.
- Every Friday - Mini Explorers: 1000-1130.
- 1 x Wednesday half term: Mini Explorers: 1000-1300.
- MT Run to the Metro: 2 & 19 April. Departure 0910 & Returning 1400.

The Alnwick Garden Mindfulness Day and Northumberland Recovery College events are still to be confirmed.

**LONGHOUGHTON PARISH COUNCIL
IS ON SOCIAL MEDIA**

Search for Longhoughton Parish Council on Facebook, and Longhoughton pc on Twitter and Instagram.



LONGHOUGHTONPC